



Best value business solutions for  
**every size** of company



**Dimensions Manufacturing**  
Fully integrated manufacturing solution

# Welcome

## 4 Overview of Dimensions Manufacturing

## 5 System-wide Features

**Security & Reliability, 360° views and Integration**

## 6 Example Manufacturing Flow Diagram

## 8 Creating Works Orders

**Works Order Creation Wizard** - Full control over the order entry process

**Setting Rules** - Minimum/suggested build quantities, batch quantities

**Merging Works Orders** - Efficient and prioritised production

## 10 Managing Works Orders

**BoM Variations** - Controlling customisation

**Allocating Stock** - Reserving stock to meet sales and production demands

**Issue/Return of Components** - Tracking the real cost of every component

**Alternative Items** - Flexibility of components

**Request to Purchase** - Making the buying process part of manufacturing control

**Sub-analysis** - Flexibility in tracking stock

**Serial Numbering** - Tracking components and finished goods

## 12 Production Control

**Controlling Priorities** - Ensure your best customers are satisfied first

**Factory Routing** - Enabling excellent visibility of job progression

**Tracking Production Stages** - Clear visibility of your work in progress

## 14 Post-production

**Profitability** - Monitoring your production profitability

**Documents** - Completion and Quality Control certificates

**Under/Over Production** - Keeping track of discrepancies in production

**Backflushing** - Ensure you account for all your components

## 14 Key Features



\* Accredited Product



\*The Institute of Chartered Accountants in England and Wales has accredited the Dimensions range of software under the terms of its IT Product Accreditation Scheme.

Purchasers should ensure that the software and support meet their own requirements as the Institute of Chartered Accountants in England and Wales will not be liable for any damage incurred by any person occasioned by the use of the software, or any related products or services, howsoever caused.

# Welcome to Access Accounting

This brochure introduces you to the manufacturing facilities within the Dimensions software solution from Access Accounting. It is designed to give you a broad understanding of the commercial benefits of the system, and to confirm our ongoing commitment to providing the very best solutions for your business.

The Access range includes business and accounting solutions for use in any industry, specialised solutions for the manufacturing and distribution sectors, an HM Revenue and Customs approved payroll solution and integrated customer relationship management.

Literature covering each solution is available from your local Access Specialist Centre. Alternatively, please contact Access direct using the numbers given on the back of this brochure.

**We look forward to the opportunity of working with you.**

## Commitment to You

---

We want to make it easier for you to succeed in business. This means increasing your turnover and reducing your costs.

Access can help you to do this in two ways. Firstly, by bringing complete clarity to your business data and encouraging proactive decision-making throughout your company. Secondly, by giving you all the tools you need to control and improve your business processes.

To make this possible, Access solutions combine the operational advantages of modern technology with the security afforded by traditional, fully auditable 'double entry' accounting methods. This gives you an appropriate balance of reliability with flexibility, and functionality with ease of use.

Our commitment to you is simple. We will deliver the solutions you need to run your business more profitably.

## Vision for the Future

---

Our vision is to develop and provide the software that **every** user recommends. This vision drives us relentlessly to better the services and products that we offer.

The Real Finance FD Excellence Awards (2005) revealed that Access has the highest user recommendation level in the mid-range accounting software market.

Access customers proved to have very high satisfaction levels, and are up to twice as likely to recommend their accounts package to others as the customers of eight leading competitors.

One FD commented: "It is a stable and reliable package, easy to use with intuitive menus, but rich with functionality, at an affordable price. It's also well supported in the unlikely event of a problem."

## Accreditations

---

Access Accounting is one of only a handful of UK software vendors to have achieved Microsoft Gold Certified Partner status. This is given in recognition of long-standing expertise in the development of robust software products based on Microsoft technologies.

Individual Access solutions are fully accredited by the industry's major authorities, including HM Revenue and Customs and the ICAEW (Institute of Chartered Accountants in England and Wales).



Access complies fully with the BASDA Code of Practice and was instrumental in drafting many of its quality standards, including those for software development, quality assurance testing, maintenance and documentation.

Both the company and its solutions have received numerous awards for innovation and excellence.

## Software of the Year

---

Access' flagship Dimensions range of software has been named Mid-range Software of the Year 2005 by Accountancy Age.



We have consistently been recognised as one of the best.

Dimensions has been named as one of the top four mid-range software packages every year for the last six years and has received numerous commendations from the judges.

This year, the judges remarked that the category was among the hardest fought, but commented that Dimensions' 'flexibility and high level of customer satisfaction make this the outstanding package for medium sized UK businesses'.

## Dimensions Manufacturing

---

to give you full control of your manufacturing operation

Dimensions Manufacturing is designed from the top down to give you full **control**. It gives you visibility of the entire production process - from the original sales order to the finished goods warehouse - you will know, at any point in time, the status of the orders that are in progress, and which orders are next in line.

Dimensions Manufacturing has been designed with industry specific needs in mind. It combines excellent functionality with **practical, easy-to-use tools**, that make the tasks of scheduling and controlling a production operation both easier and more efficient.

Dimensions Manufacturing gives you **flexibility**. It powerfully assists you in creating the works orders you need, when you need them, taking into account alternative items, BoM variations and free WIP.

Dimensions Manufacturing calculates your commitments for you. In one easy-to-view screen, the solution will detail the precise situation of both your component stock and your finished goods.

Dimensions Manufacturing will examine works orders that are in progress, sales orders that have stock allocated to them and purchase orders with goods awaiting delivery and collate the information at summary level. This summary will give you **visibility** of your entire operation, outlining the status of your stock levels and calculating exactly what free stock you have available to sell.

As with all Access modules, Dimensions Manufacturing is fully integrated with the core financial ledgers provided by Access Accounts, and with all the key business modules, such as Sales Order Processing, Purchase Order Processing and Stock Control.

This means primarily that you only need to enter information once, and it will be available in any area of the system, significantly reducing wasted time and effort re-keying.

Secondly, it means that the information you view - the business critical information that you rely on - is always accurate and always up to date. In a busy manufacturing environment, your staff need to make critical decisions, often with limited time to do so. Dimensions Manufacturing shares **accurate, accessible information**, in real-time, with the people who need it - making it easy for them to make the right decisions based on the whole picture.

Dimensions Manufacturing makes it easy to control your entire operation. The Works Order Creation Wizard enables accurate and efficient order entry, guiding you through each stage of the production process, helping you create the works orders you need to meet your sales requirements.

# One integrated solution

to give you full control of your manufacturing operation

## Security & Reliability

Keep your business critical information secure

Fully definable user profiles allow you to control user access within Works Orders. Set your own authority levels to prevent users from editing or cancelling works orders, only allowing them to progress the order through the production process.

Built around Microsoft's SQL Server database, Dimensions Manufacturing teams an unlimited capacity for historic data with the highest possible levels of data security and excellent processing speed.

An independent survey carried out by the Institute of Chartered Accountants in England and Wales (ICAEW), examined the rate of 'business critical failures' experienced by users of accounting software. Access solutions were found to have the lowest risk of business critical failure in the market, compared to 8 leading competitors.

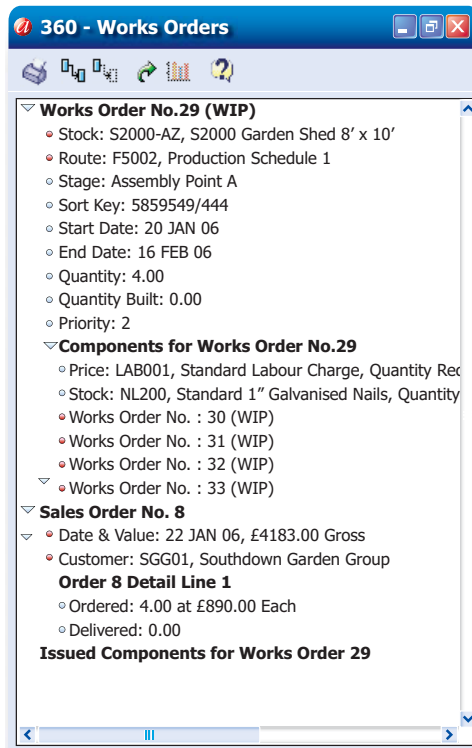
## 360° Views

Answer every question with confidence

Dimensions 360° is a revolutionary enquiry system that enables you to view your Dimensions information in a fast and efficient way.

360° views contain a simple yet comprehensive record of everything connected with your chosen works order. They also act as a gateway to the rest of the system, enabling you to pursue your enquiries in any direction and to any level of detail.

Choose to view information either at summary or detail level, and bring instant, all-round visibility to your key business activities.



A typical 360° view screen showing the range of information that is made available with one click



## Integration

Ensure accurate information is widely accessible

Access Accounts modules integrate seamlessly with each other in real-time and include powerful facilities for exchanging information with all your other business applications.

This means that transactions generated in point of sale solutions, web sites, custom software packages and other remote systems can enter straight into your daily workflow.

Building a single, central database for all your business activity is the most important step in eliminating data re-keying and duplication. With their open-architecture and Microsoft SQL Server power, Access solutions are ideal for this task.

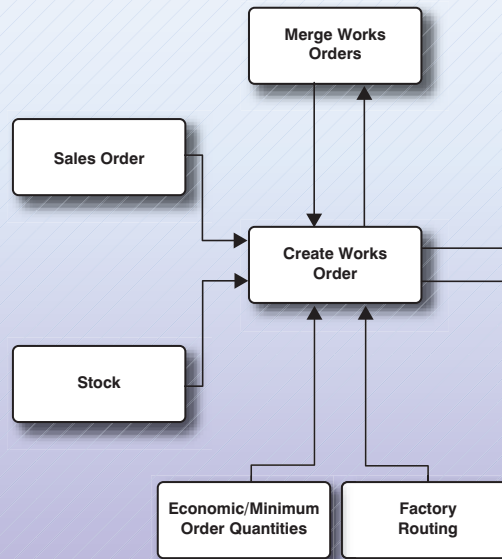
To help maintain the accuracy and integrity of your core data, transactions brought in from other systems are fully validated before they can enter Dimensions.

Events in your database (such as new orders or a specific stock level) can automatically trigger e-mail alerts, complete with business intelligence reports. These can be used to control workflow and remind your staff of their outstanding tasks and deadlines.

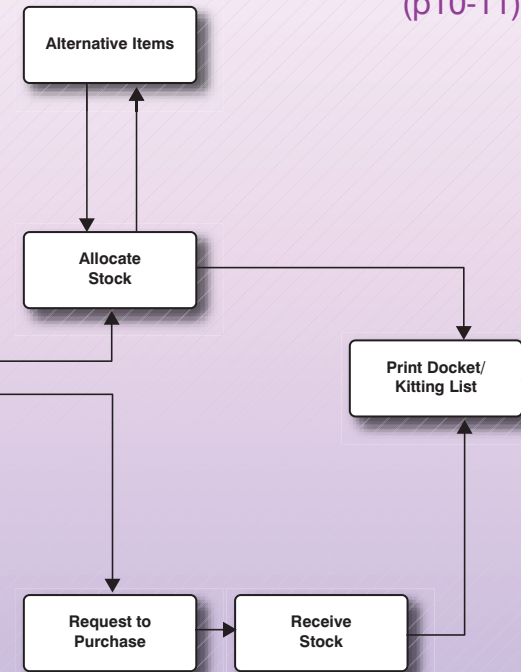
This extensive integration eliminates repetitive tasks, reduces errors and significantly increases productivity.

# Example Manufacturing Flow Diagram

## Creating Works Orders (p 8-9)



## Managing Works Orders (p10-11)



# Whatever your workflow...

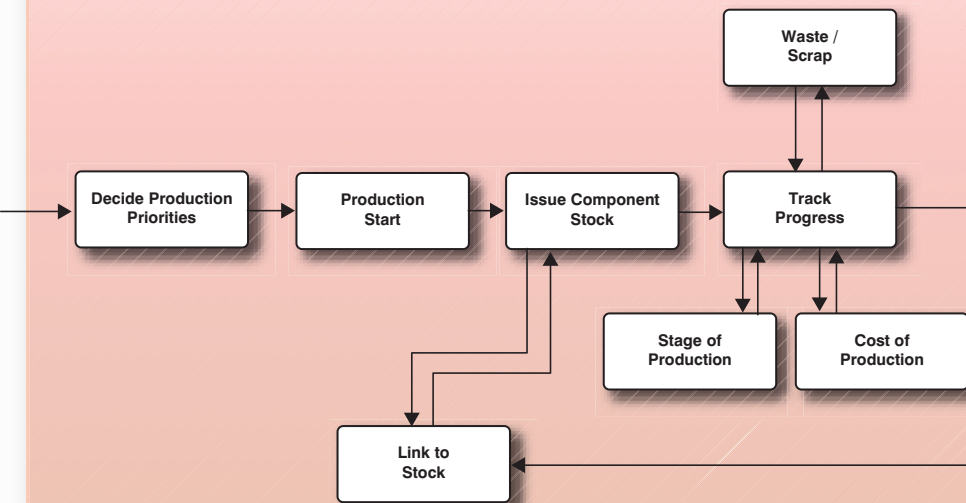
## Dimensions Manufacturing gives you control

Dimensions Manufacturing is extremely flexible in the way it can be used, allowing production managers to operate exactly the processes they need.

This workflow diagram shows just one of the ways Dimensions Manufacturing can be used to make production scheduling more manageable, make production more efficient, and give staff more accurate, accessible information.

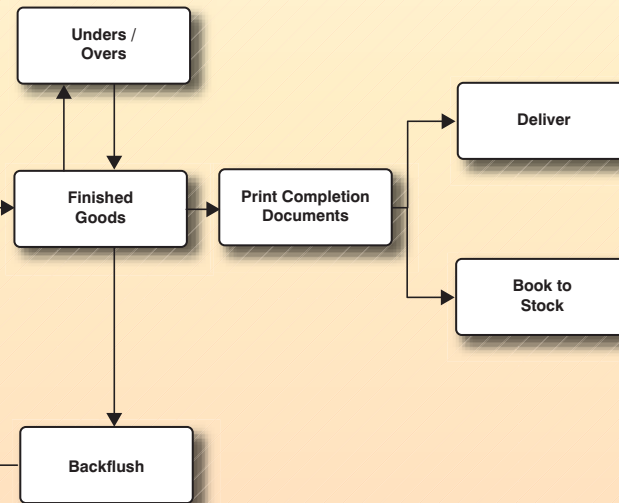
### Production Control

(p12-13)



### Post-Production

(p14-15)



# Creating Works Orders

## Benefits of using the wizard

- Enables time and cost efficient production
- Allows you to easily take advantage of economies of scale
- Assists quick and easy automation of the production planning process
- Ensures your most important customers are always satisfied

## Works Order Creation Wizard

### Full control over the order entry process

The Works Order Creation Wizard is a powerful facility that helps you create the works orders you really need for the right products, produced at the right time to meet sales requirements:

- Reserve component stock for particular orders
- Upgrade the production quantity to bring the stock holding back up to minimum/maximum levels.
- Batch quantity control automatically upgrades the build quantity to comply with your batch quantity rules. So, if it economical for you to build in fives, a sales demand for 12 products will become 15, with 3 items being assigned to free WIP.
- Only build the extra items you need, taking into account any available finished goods or free items still in production.
- Combine multiple sales order requirements into a single works order to aid production efficiency.
- Ensure that your most important customers are made a priority in terms of current stock holding and production priority.

By remembering the rules that you normally work to, the Works Order Creation Wizard makes the process of setting production quantities and timing an easy and straightforward process.

Whether building to fulfil a sales order or building for stock, the wizard guides you through the creation of each works order, increasing efficiency and minimising errors:

- When creating a works order to fulfil a sales order, the wizard will guide you through the process of reviewing all outstanding sales orders and calculating what production is required to meet the sales demand.
- When building to replenish stock levels, the wizard will help you examine the current stock situation and generate works orders to bring the stock up to the required (pre-defined) levels taking account of sales and production commitments.
- When building on an ad hoc basis, the wizard will allow you to specify the items you wish to build and take you through the decision making process to create the relevant works orders.

Works orders can also be created 'on the fly' at the time of entering a sales order without using the creation wizard.

Once you have selected your preferred method for creating a works order, the wizard will guide you through a series of options regarding stock and build quantities.

# Control made easy

Dimensions Manufacturing makes it quick and easy to create works orders with your business rules built-in.

## Setting Rules

### Minimum/Suggested Build Quantities

Set minimum build quantities to ensure that you take advantage of economies of scale. When a minimum build quantity is not reached by a sales order, the system will suggest you manufacture the minimum quantity. This ensures you are not constantly producing small orders.

Maximum build quantities can also be set so you can be sure that your maximum stock holding levels will never be exceeded.

### Batch Quantities

Set batch quantities to ensure that you make the most efficient use of your materials. This will minimise wastage and enable you to better ensure a profitable organisation.

You can choose to override the batch quantity if there is a particular order that requires this flexibility.

### Work in Progress

Should these rules require you to manufacture more products than you have physical sales orders for, Dimensions Manufacturing will track this 'free work in progress quantity' ready to be sold in a future sales order.

When creating a new works order, you can choose to consider any 'free work in progress quantity' to fulfil that order.

**Works Order Creation Wizard**

**Build requirements based upon Sales Orders**  
**Suggestion Rules** - When suggesting works orders to be created, apply the following rules.

- Automatically allocate available components
  - Always select default BoM sub analysis
  - Always select first serial numbers
- Combine sales order requirements to produce consolidated works order
  - Finish date tolerance  day(s)
- Create new works order for each sales order
- Consider free stock available to meet requirement
- Consider any free WIP to meet requirement
- Ignore stock holding quantity
- Upgrade suggestion to minimum stock holding quantity
- Upgrade suggestion to maximum stock holding quantity
- Ignore minimum build quantity
- Ignore batch quantity

Buttons: Set as Default, Clear, < Back, Next >, Cancel

### Rule options include:

- Automatically allocate available components
- Always select first serial number
- Ignore minimum build quantities
- Ignore batch quantities
- Combine sales orders / requirements
- Create new works order for each sales order
- Consider free stock
- Consider any free work in progress
- Bring to minimum/maximum stock recommended level (physical, free or projected)

## Merging Works Orders

### Generate Efficient and Prioritised Production

Dimensions Manufacturing enables you to take any number of pre-production works orders for the same product, and merge them into a single works order to increase the efficiency of your production run.

When you have selected the works orders to be merged, the system will automatically associate the originating sales orders to the new works order and mark any stock allocations made.

This method of managing works orders enables you to take advantage of the economic benefits of larger production runs without losing the intimate relationship between the works order and the initial sales order.

Works orders can only be merged by users with the relevant access levels. Customisable user profiles can be set for each user, dictating which areas of the system can be accessed and interacted with. You can define security levels so that each member of your staff can only access the information they need in order to do their jobs.

### Benefits of merging works orders

- Increases production efficiency
- Allows you to take advantage of economies of scale
- Makes picking of components easier
- Increases the speed of production scheduling allowing fast and efficient customer delivery

# Managing Works Orders

## BoM Variations

If you manufacture products that are similar, but have certain aspects of customisation, you can control this by using Bill of Material variations. For each works order that you create you can specify the elements that are different from the standard BoM.

Once in the Works Order Control screen you are able to delete any components not required and add in any extra ones, with the 'cost to complete' being updated as you go.

The works order control screen provides management of all aspects of your works order from a single colour coded screen.

**Works Order Control**

Open Works Order

WO No.	Stock Item	Quantity	Built	Start Date	End Date	Route	Latest Stage	Sort Key
5	T3003-AZ / S3003 Garden Table	3.00	0.00	21 JAN 06	25 JAN 06	F5000	Assembly Point A	549594/44
17	T3012-AZ / S3012 Garden Table	2.00	0.00	23 JAN 06	25 JAN 06	F5000	Components	34783/448
23	T2049-AZ / T2049 Garden Table	4.00	0.00	23 JAN 06	27 JAN 06	F5000	Assembly Point A	584856/54
29	S2000-AZ / S2000 Garden Shed	4.00	0.00	27 JAN 06	3 FEB 06	F5002	Assembly Point A	585954/44
35	S2049-AZ / S2049 Garden Shed	5.00	0.00	28 JAN 06	4 FEB 06	F5002	Assembly Point A	58458/44
41	C1010-AZ / C1010 Garden Chair	10.00	0.00	28 JAN 06	4 FEB 06	F5096	Assembly Point A	589459
53	C1052-AZ / C1052 Garden Chair	9.00	0.00	28 JAN 06	5 FEB 06	F5096	Components	34567
59	C1121-AZ / C1121 Garden Chair	30.00	0.00	2 FEB 06	6 FEB 06	F5096	Docket Production	

Customer Specification:  
The customer requires the oak wood stain

Components for WO 29

	L	BF	P	Status	Quantity	Issued	Allocated	Needed	Available	Possible
LAB001/Standard Labour Charge				F	18.00	0.00		18.00		
NL200/Standard 1" Galvanised Nails				P	372.00	0.00	0.00	372.00	291.00	291.00
<b>WO 30-SBP10/Standard 10' Back Panel</b>				<b>W</b>	<b>4.00</b>	<b>0.00</b>		<b>4.00</b>	<b>1097.00</b>	<b>4.00</b>
LAB001/Standard Labour Charge				F	6.00	0.00		6.00		
NL200/Standard 1" Galvanised Nails				C	312.00	312.00	0.00	0.00	291.00	0.00
SBP10B/Standard Wall Boards 7' x 1'				C	40.00	40.00	0.00	0.00	906.00	0.00
SBP10F/Standard 10' Back Panel Frame				C	4.00	4.00	0.00	0.00	1095.00	0.00
<b>WO 31-SF810/Standard Flooring 8' x 10'</b>				<b>W</b>	<b>4.00</b>	<b>0.00</b>		<b>4.00</b>	<b>1097.00</b>	<b>4.00</b>
LAB001/Standard Labour Charge				C	10.00	10.00		0.00		
NL200/Standard 1" Galvanised Nails				C	224.00	224.00	0.00	0.00	291.00	0.00
SF810B/Standard Floor Boards 8' x 10'				C	40.00	40.00	0.00	0.00	1304.00	0.00
SF810F/Standard Floor Frame				F	4.00	0.00	0.00	4.00	1103.00	4.00

WO 29 Values      Estimated Cost | 2036.16      Actual Cost | 635.70      Cost to Complete | 1675.88

## Allocating Stock

### Maximising productivity, minimising waste

The stock allocation feature enables more accurate estimation of completion dates, greater cost effective use of the materials and the determination of more accurate requirements for outstanding materials.

Using the allocation process you can reserve stock for particular orders, regardless of whether or not they are about to be put into production - thus ensuring that your preferred customers are always satisfied first. Any components that are available can be allocated against a given works order and effectively reserved for that order, avoiding the common delays that can occur when other orders 'steal' the components intended for a particular order.

At the component allocation stage, Dimensions Manufacturing will show which orders have all components available. If you wish, you can set a business policy that allows only these orders to be released to the factory floor. This is an excellent way to ensure your factory does not get clogged up with part-completed orders that are awaiting one component or more. The benefits are a low work in progress inventory and correspondingly short manufacturing lead times.

If your process requires it, you can choose to automatically allocate available components at the time of creating a works order, thereby bypassing the allocation stage.

# Control all your activity

## from one easy set of screens

Dimensions Manufacturing makes it easy to manage your works orders so that you can always meet your customers' deadlines. Controlling your stock of components is a fundamental part of the manufacturing process. Companies can sometimes fail to deliver whole orders on time because of the unavailability of a relatively low-cost component. This can seriously affect the commercial relationship between a manufacturer and its customers.

### Issue/Return of Components

#### Issuing Components

In order for assembly of products to begin, you must first issue the components. This could not be easier than with Dimensions Manufacturing.

Once the stock has been allocated, simply issue the components to be physically moved to the factory floor.

When you view each works order, you can instantly see the status of the components - whether they have been allocated to the order and whether or not they have been issued to the factory floor. This enables full visibility of which orders should be undergoing or awaiting manufacture.

Upon component issue you can choose to generate a picking list, enabling the components for each job to be gathered together and taken to the specified production area.

When components are moved to the factory floor, this is reflected in your accounts; the value of your stock decreases and the value of your WIP increases.

#### Reverse Issue

When manufacturing requirements undergo late changes, you may have already issued the components to a works order. If you need to subsequently transfer some or all of these components back into stock, you can use the same quick and easy process to reverse the issues previously made.

### Alternative Items

Where a manufactured item can utilise a choice of components, you can specify the preferred first choice of components, and an unlimited number of alternatives that can be used in their place if necessary.

When creating a works order, if the first choice component stock level is insufficient to fulfil the assembly, you can simply select the missing stock item and you will be shown a list of pre-defined alternatives to choose from.

This selection is carried through to the picking list, ensuring the order is not delayed if an alternative component is available.

### Request to Purchase

Whilst entering a works order, you can easily check the available balance of the components you need to fulfil the order, and any alternatives that can be used.

If there is a shortage of any component, you can instantly create a 'back-to-back' purchase order (Request to Purchase) to source the required components from your supplier.

When Dimensions Manufacturing is used in conjunction with Access Purchase Control, you can also introduce up to 2 levels of purchase order approval to control the spend on additional component stock.

### Sub-analysis

If you store components in different warehouses or different locations within the same warehouse, you can use sub-analysis to view component stock levels in each location. This allows you to confidently specify the location from which components are picked for issue to a works order.

Or use sub-analysis to specify a unique attribute of a stock item to differentiate it from other items with the same stock code. For example, if you manufacture pens with 4 different clip colours, you could either set up the 4 clips as different stock items, or set them up as a single stock item and use sub-analysis to specify the 4 different colours.

### Serial Numbering

Dimensions Manufacturing easily enables the use and tracking of serial numbered components within your manufacturing operation.

When allocating component stock, you can allocate serial numbered items one by one or by bulk selection. These serial numbers will appear on the component picking list for the assembly, ensuring that the correct items are taken from stores.

Assign serial numbers to each finished item as they become finished goods, ensuring full traceability.

# Production Control



## Scheduling

Using the search facilities available in the Works Order Control screen you can easily extract information from which to build schedules that suit your way of working.

You can search by customer, product type, priority or any other criteria relevant to your business.

## Controlling Priorities

### Ensure your best customers are satisfied first

The review and adjustment of priorities is a fundamental aspect in ensuring that important orders are delivered on time. Dimensions Manufacturing can assign a production priority number against each works order. This aids the prioritisation of the allocation of available materials against the order, as well as specifying which orders are serviced first.

Ensure that a particular order is satisfied quickly by flagging it as a high priority works order. This priority can be pre-defined within the Works Order Creation Wizard on an individual basis or set during the prioritisation of production.

Alternatively, allocate your best customers a high priority ranking and works orders generated for them through the wizard will automatically be set to the same high priority. These default priorities can be over-written for individual works orders, and the authority to do so can be limited to specified members of staff.

Dimensions Manufacturing will calculate the latest start date for production for you, by considering the requirement date on the sales order and the production lead time.

## Factory Routing

### Enabling excellent visibility of job progression

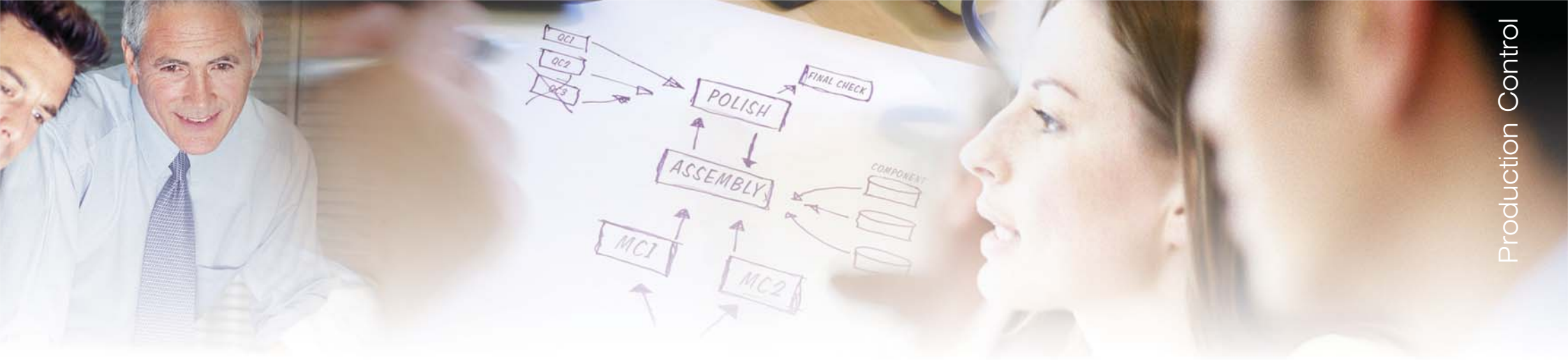
You define the routes that products will take around the factory in order to be completed. If each finished product always takes the same route, the default route makes this an automatic process.

Multiple routes can be entered and you can set up alternatives for situations in which an order can be completed via more than one routing. In this way you can rebalance the workload across your factory floor, and help eliminate the bottlenecks that hold up production and cause orders to be delivered late.

Free format notes can be associated with each route so that supplementary instructions can be applied where necessary.

Marking the job between the different stages of the route gives excellent visibility of the overall job progress. Dimensions Manufacturing enables you to define your preferred sequence of operations.

This in turn enables you to easily see which production areas are becoming bottlenecks.



## Tracking Production Stages

### Clear visibility of your work in progress

Dimensions Manufacturing enables you to accurately track individual orders through the stages of the factory routing process. This level of visibility is an essential tool to help control the flow of work through the operation.

### Stage Progression

Definable user profiles allow you to grant your staff the privileges needed to progress jobs through the factory. Only staff with the assigned access levels will be able to progress the job, enabling your production manager to accurately track the production process. If it suits your way of working, you can assign the responsibility of stage progression to your factory staff - ensuring up-to-date information at all times

### Production Status

Generate a 'work to' list, showing which stage of the build a works order has reached, and its progress to date. Use it to make sure completed orders will arrive at the shipping bay in time to meet their promised delivery dates.

### Tracking WIP and Estimated Cost

As well as tracking physical progress, Dimensions Manufacturing tracks the cost of each order as it passes through your factory. Ensure any extra work that has been carried out on an order, or extra components that are used to complete the order, are fully accounted for. The system also tracks and accounts for instances where the actual components cost more than specified in the Bill of Materials.

Dimensions Manufacturing shows you the true cost of the order and compares it to a standard cost of manufacture. You can quickly discover if certain jobs are using more time and/or materials than you planned, and take action.

### Writing Off Items

Dimensions Manufacturing allows you to easily account for any waste. Both materials and finished goods can be written off if they are damaged in production or do not meet your required production standards.

If a works order does not produce enough finished goods to meet a sales order, you can either issue the components needed to complete the order and production will continue as planned, or you can mark the order as complete and simply produce a new works order for the shortfall. Write off privileges can be restricted to ensure you remain in control.

**Benefits of Production Control**

- Ensure that your most important customers are made a priority in terms of current stock holding and production priority
- Track the progress of each order as it passes through the factory
- Accurately account for wastage
- Tracking of actual time and materials provides true production cost analysis

# Post-production

## Under/Over Production

### Keep track of discrepancies in production

Dimensions Manufacturing makes accounting for over and under production of finished goods straightforward, ensuring that your stock records remain accurate.

Many factories allow for an average level of wastage during the manufacturing process. However, the practicalities often mean that the number of items completed does not match the number anticipated – instead there are either too many or too few.

In the case of over production, you can either amend the original sales order to include the extra items (if your commercial terms allow for this), or you can assign the extra items to stock to be used later for the fulfilment of other sales orders.

In the case of under production, you can amend the sales order to reflect the lower quantity and call the order complete. Alternatively, you can raise a further works order to make up the difference and merge it with other works orders for the same product to take advantage of economies of scale.

Dimensions Manufacturing will automatically divide the cost of the total build by the final number of finished goods created. On completion of the works order the actual cost of production is used to move the stock into finished goods.

## Profitability

### Monitoring your production profitability

Keeping track of the profitability of your operation is an essential aspect of control. As you update information within Dimensions Manufacturing, the core financials data is automatically updated to reflect the present status. This puts a wide range of analysis options at your fingertips, with the assurance that you are always working from up to the minute information.

When a works order is created the system automatically creates an estimate for the job, based on the BoM, which includes both the anticipated component usage and cost of labour to complete the job. As the job progresses through the manufacturing process and actual component and labour usages are reported, the system tracks the actual cost against the estimated cost for the job.

This information can be reported upon in a wide variety of ways enabling you to fully understand your manufacturing profitability, and make changes to your methods in order to maximise profit. You can run profitability reports direct from the system showing information grouped by product type, customer and time period. In this way it is easy to understand where you need to make improvements in manufacturing processes, or re-negotiate pricing.

## Documents

### Completion and Quality Control Certificates

Dimensions Manufacturing provides you with fully customisable document templates, enabling you to produce printed certificates associated with the production of finished goods on a specific order - exactly as you need them.

The documents can be tailored to meet your individual product requirements, and can be altered to become your own Certificates of Conformity or Quality Control Certificates.

Documents are available whenever you need them - whether during the build process, at the completion stage or after completion - making the certification process smooth and flexible.

Specific documents can be printed for individual customers if you have a commercial requirement for such documentation.

This flexibility enables you to accurately meet your customers' documentation requirements, and to produce high quality paperwork which reflects well on your organisation.



## Backflushing

### Ensure you account for all your components

You can utilise backflushing to account for any or all of the components you use in the manufacturing process. It is typically used where a large number of low value components are utilised in a build. Examples would be fixings such as rivets, screws, and washers, or low value plastic components.

With Dimensions Manufacturing you can allocate components as backflush within the Bill of Materials – meaning that you are not required to allocate these components via the Works Orders Control Screen. Instead, when the finished item is booked into stock, the system automatically assumes it has used the correct number of backflush components, as specified in the BoM.

Use of backflushing for low value components is optional – and the process can also be applied to higher value components if this fits with your manufacturing processes.

It is especially appropriate where you are operating a kanban supply systems for these components. In this case you do not want to book these components out of stores against each job – instead you will need to book them out in kanban container loads. The usage of these

kanban-controlled items is then accounted for at the finished goods stage using the automatic backflush functionality.

The functionality is controlled as part of the BoM and once set up for a particular assembly, all orders for that item will be handled via backflush for the components marked as such.

Dimensions Manufacturing makes it easy to automatically issue items retrospectively. It is the ideal way to record the usage of low cost, high volume components, saving you time yet still accurately accounting for them.

## Key Features

**At Access we have a solution for every manufacturing operation.**

**All the features immediately below are available in Access Dimensions Manufacturing and are described in this brochure.**

Economic order quantities	✓
Multi-level bill of materials	✓
Multiple operations / stages	✓
Consolidation of works orders	✓
Generation of multi-level works orders	✓
Works order wizard	✓
Bill of materials variations	✓
Alternative component items	✓
Automatic allocation of components	✓
Back to back ordering of components	✓
Accounting for unders and overs	✓
Scrap and wastage	✓
Component backflushing	✓
Automatic generation of serial numbers	✓
WIP update to Nominal Ledger	✓
Works order cost variance analysis	✓
360° view of production activity	✓
Production priority control	✓

**For solutions that include the following features ask for the Access Supply Chain manufacturing brochure.**

Production forecasting and MRP / MRPII
Labour and capacity resource planning
Time recording and SFDC
Full batch traceability and shelf life
Product revision / engineering change control
By-products / co-products
Tooling usage database

The Access Group offers a comprehensive range of best-value business software, including:

- **Client/Server business and accounting solutions**  
for medium and large companies
- **LAN business and accounting solutions**  
for small and medium companies
- **Integrated CRM solutions**  
for high performance relationship management
- **Full MRPII and capacity planning**
- **Supply Chain ERP solutions**
- **Government-approved payroll solutions**  
including P11D
- **Business Intelligence solutions**  
and advanced management reporting
- **Integration tools**  
for seamlessly linking any number of business applications



**Access Accounting Ltd**

The Old School Stratford St Mary  
Colchester Essex CO7 6LZ United Kingdom  
Phone 0845 345 3300 or +44 1206 322575  
Fax 01206 322 956  
E-mail [info@access-accounts.com](mailto:info@access-accounts.com)

[www.access-accounts.com](http://www.access-accounts.com)

Access Accounting Ltd has taken every reasonable care to ensure that this brochure accurately reflects the Access software range. Access Accounting Ltd has a policy of continual development and will add new features on an ongoing basis. On occasions, it is possible that an existing feature may change or be deleted. If a specific feature is critical to your business, you should confirm that it is available and will continue to be available at the time of ordering.